

Services We Provide

At the New York Child Resource Center, Inc. we strive to prepare a child for successful entry into the preschool setting, as well as integration into the community at large.

The New York Child Resource Center offers the following support services:

- Bilingual Services
- Diagnostic Evaluations
- Service Coordination
- Applied Behavioral Analysis (ABA)
- Special Instruction
- Speech/Language Therapy
- Occupational Therapy
- Physical Therapy
- Family Training
- Parent Support Groups
- Psychological Consultations
- Audiological Consultations
- Pediatric Consultations
- Speech Groups
- Socialization Groups

NEW YORK CHILD RESOURCE CENTER INC.

NEW YORK CHILD RESOURCE CENTER INC.



A Good Start Lasts A Lifetime



OUR LOCATIONS

South Bronx Site

348-50 East 146th Street
Bronx, NY 10451
Tel. (718) 585-0600
Fax (718) 585-0152

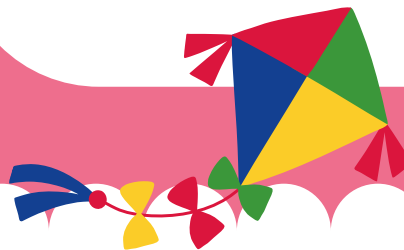
Brooklyn Site

706 Quincy Street
Brooklyn, NY 11221
Tel. (718) 443-3440
Fax (718) 443-3499

Manhattan Site

4624 Broadway
New York, NY 10040
Tel. (212) 569-1044
Fax (212) 569-1066

NEWYORKCHILDRESOURCECENTER.COM



NYCRC

Early Intervention Program (ages newborn to 3)

The New York Child Resource Center, Inc., is licensed by the NYC Department of Health's Division of Day Care and the Department of Mental Health. All professional staff are licensed/certified in their respective disciplines. All staff are required to participate in ongoing training and have been selected based on superior qualifications and required personnel standards. All services are provided at no cost to families.



Providing Early Intervention
Services to eligible children and
their families since 1993

NEWYORKCHILDRESOURCECENTER.COM

Our Home based Program

Our Home based Early Intervention Program consists of the provision of services in the child's home or "natural environment" with the frequency and duration mandated on the Individualized Family Service Plan (IFSP). These services are provided by appropriately certified professionals with years of experience providing the following services:

Applied Behavioral Analysis (ABA) • Special Instruction • Speech Therapy • TSHH/TSLD Services • Physical Therapy Occupational Therapy • Family Training • Social Work Services

Service Coordination

New York Child Resource Center, Inc. provides both Initial and Ongoing Service Coordination. Your Initial Service Coordinator will help you with all the steps required to acquire services starting with your child's evaluation through your first Individual Family Service Plan meeting, if your child is found to be eligible for services. At the first IFSP meeting you will then choose your Ongoing Service Coordinator who will make sure that your child receives all services on the IFSP, help you make changes to the IFSP if necessary and insure that your IFSP is reviewed on a regular basis.

Why Choose New York Child Resource Center?

New York Child Resource Center, Inc. treats each child as an individual, working according to the child's specific needs and individual stages of development. Each child's program is tailored to meet his/her developmental levels and learning rate so that each child may reach his/her maximum potential



Scan here to visit our website

Evaluations

Home-based and Center-based Evaluations Multidisciplinary Evaluations are conducted by experienced Early Intervention professionals to determine eligibility for services for young children birth to three years of age.

The team includes:

Occupational Therapists • Physical Therapists Psychologists • Social Workers • Special Education Teachers • Speech/Language Pathologists

Evaluations are administered at no cost to families on site or at our four locations or in the child's home. communication and social skills.

Communication Group

A New York State certified Speech and Language Pathologist or Teacher of Speech and Language Disabled utilizes socialization to enhance language. The group of no more than 10 children accompanied by their 1:1 Teacher Assistant enjoy group activities while addressing the pragmatics of language.

Applied Behavioral Analysis

Our Center based ABA Classroom consists of 2 hour classroom sessions led by a certified Special Education Teacher and a 1:1 Teacher Assistant for each child. The children (no more than 8 students to a class) receive a combination of 1:1 discreet trials to address individual needs as well as group activities to promote generalization and socialization. The activities include: circle time, arts and crafts, gross motor play (indoor/outdoor), sensory activities and snack.

Group Socialization

This group provides the opportunity for children with special needs (no more than 10 to a group each with a 1:1 Teacher Assistant) to socialize with typically developing peers who compose 51% of the group. The children participate in a variety of group activities in which peer modeling assists in promoting generalization, socialization and communication.

